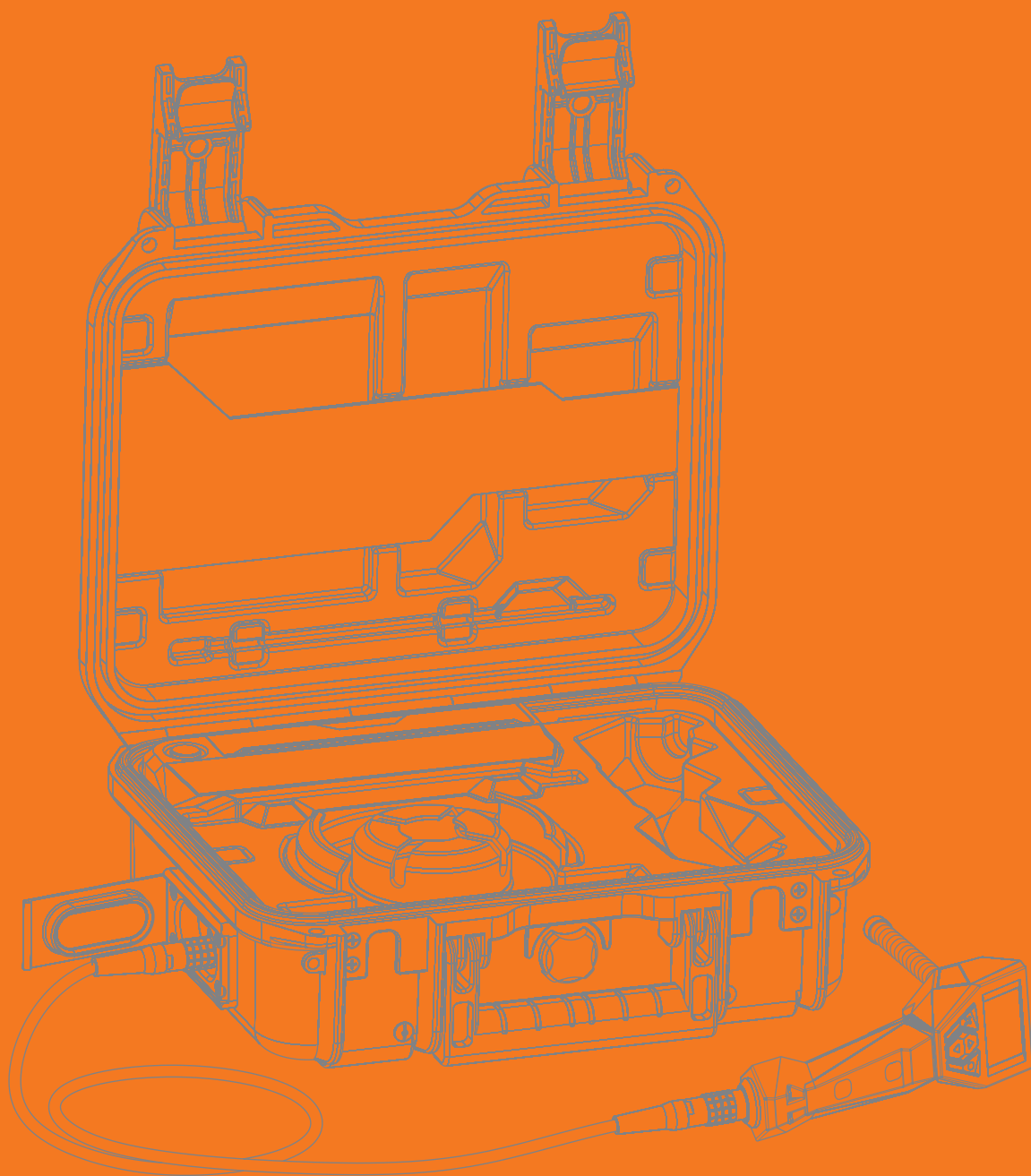


SF₆ LaserGasTest



Insulation gas leakage detector

SF₆ LaserGasTest



Special technologies, Ltd.
www.detectors.lc-solutions.com



HYPERTECH LASER SYSTEMS GmbH
www.hypertech-lasers.de

SF₆ LaserGasTest high sensitive insulation gas leakage detector
for gas-insulated switchgear (GIS) (and not only...)



SF₆ LaserGasTest

Specifications

Detected Gas	Insulation gas (SF ₆)
Sensitivity for SF ₆	1 ppbv or 0.002 g/year
Range	10 ppbv — 5000 ppmv
Accuracy	± 10 % @ 10 ppmv
Response time	< 2 s
Internal memory	16 records
Continuous operation time	> 8 hours
Dimensions	335 x 280 x 135 mm
Weight	7.62 kg

SF₆ LaserGasTest

▶ Designed for indoor and outdoor applications:

Wide operation temperature range (-20 ... +40) °C

IP65 class of protection (in closed condition)

Mechanical shock and vibration resistant

▶ Certified:

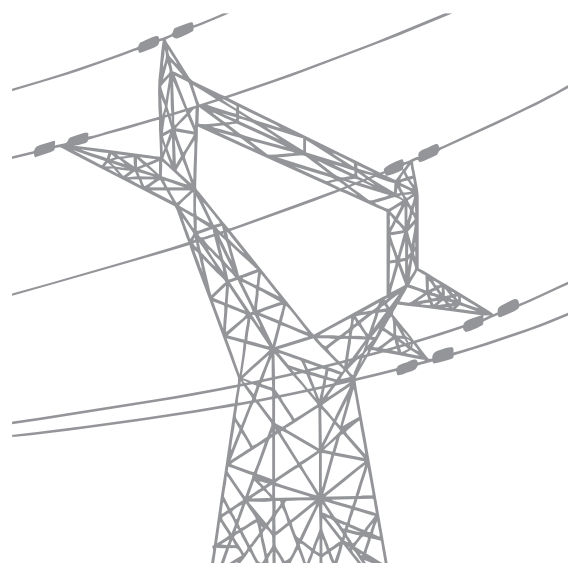
RoHS and CE compliant

▶ PC software:

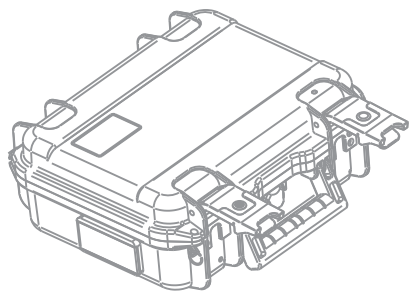
Free of charge, included in package

Service and diagnostic functions

Full remote control



Quick Start Guide

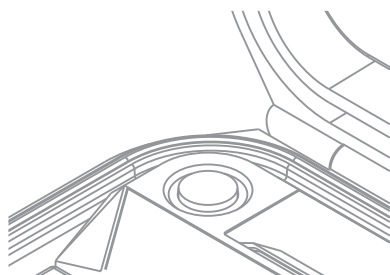
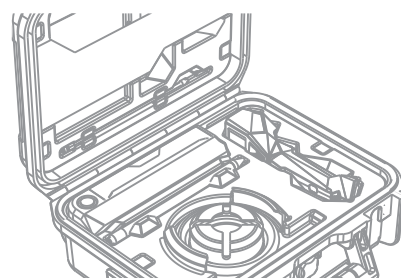


A Open case

SF₆ LaserGasTest is designed in high-impact watertight case (IP65 protection class). Instrument is designed to operate indoors and outdoors, at temperatures from -20°C to +40°C. The case is equipped with shoulder belt for comfortable transportation and operation. Original accessories are available on request.

B Connect Hand-Held Tool

Connection to the main unit for gas sampling and system control is provided by a specially designed combined pneumo-electrical cable with self-latching connectors. This ensures easy and reliable electrical and gas sampling connection. In transport condition all outlets are fully protected against dust and water with special silicone covers.

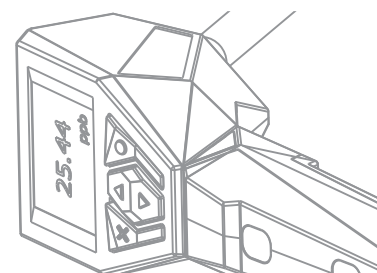


C Switch **SF₆ LaserGasTest** on

SF₆ LaserGasTest is started by pushing the only button inside the case. Inner LED panel will indicate system status. Ten seconds for startup self-tests and the device is ready to operate.

D Measure

Pull the trigger on Hand-Held Tool (HHT). The device will start measurements and the results will be presented on HHT display. HHT menu provides access to all options like measurement mode, displayed units and range, headlight, sound. Just explore HHT menu — the interface is simple and intuitive (we are sure).



However, we strongly recommend you to read the User's Manual first.

SF₆ LaserGasTest applications:

- GIS manufacturing and service — quality control, factory tests, regular technical maintenance etc.
- Gas-based (usually on SF₆) fire extinguishing systems installation and maintenance.
- Air-tightness validation of any pneumatic or hydraulic systems.
- Quality control and inspection of fumehoods.

www.detectors.lc-solutions.com
www.hypertech-lasers.de

